



PATENTED STAINLESS STEEL TANKS

*Corrosion-Resistant Top Quality Coil
Constructed Functional Storage Solutions*

New
Technology
continuous
stainless steel
spiral built top
to bottom
using tracks.

Fast
Onsite
Construction
automated
process drastically
reduces
construction time

Cost
Effective
similar prices to
traditional
cement & steel
tanks with low
life-cycle costs

Endless
Options
choose from
various sizes
and
customized to
customers
specifications



The manufacturing of Cobra Tanks is based on exceptional craftsmanship and superior structural features. Cobra Tanks have various selection of sizes and volume capacities.

Cobra Tanks

Cobra Tanks has developed a patented method of building welded stainless steel tanks and silos on site. The innovative coil construction adds strength and ease to building circular tanks and silos without a lifting devices & requiring only a small crew. This method provides increased strength eliminating the need for extra internal reinforcing and improving seismic and pressure factors.

Cobra Tanks stainless steel tanks are designed for a variety of applications. Tanks may be designed to hold potable water, fire suppression, irrigation water, brewery liquids, viniculture reserve. Cobra Tanks has unlimited potential in aqua-cultural, municipality, and wastewater functions. The tank design and construction provides water tight and durable storage, resulting in a quality product. Our tanks are designed and engineered to industry standards such as AWWA and API. All tanks are professionally engineered for state and provincial approvals.

Cobra Tanks can be constructed inside buildings, in confined spaces and in most terrains. All equipment is portable and can be easily transported by roadway or airlifted into remote areas. This patented method results in shorter construction times.

During construction, the tank can be fitted with walkways, railings, ladders, stairs, vents, access hatches, drains, flanges etc. in accordance with the customers specific requirements. Finally, the top and bottom edges of the tank are cut parallel to the ground. The bottom edge is welded directly to the stainless steel tank floor. Customers have the choice between fixed, floating covers or no covering. The finished tank will have a smooth stainless steel finish that can be painted if desired.



Why Stainless?

The excellent corrosion resistance and durability of stainless steels is the greatest benefit of this metal. As a result, of these benefits there is no need for any protective coating and regular maintenance. This will lower the life-cycle costs of the tank and appurtenances. The higher corrosion allowance allows for lighter and simpler fabrication than equivalent components in carbon steel.

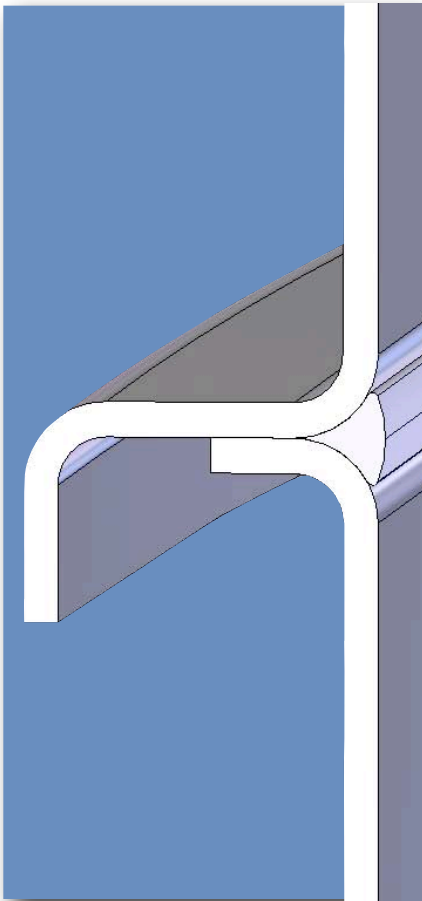
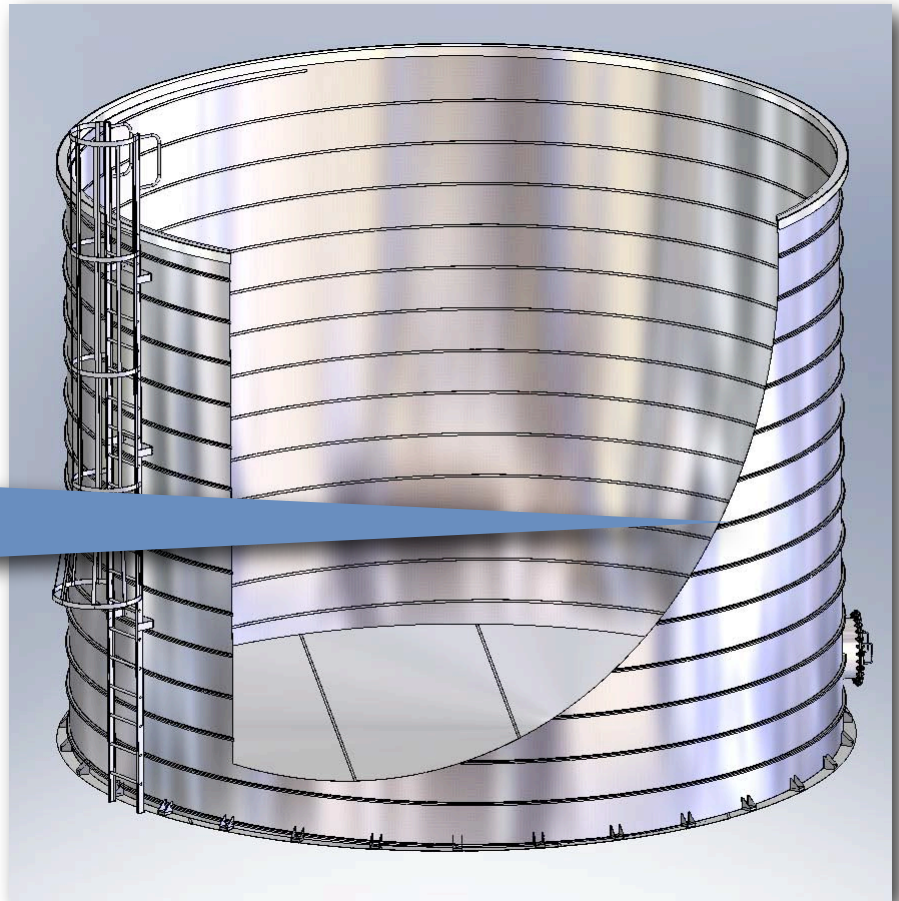
What is Duplex?

Duplex stainless steels combine many of the beneficial properties of ferritic and austenitic materials providing both high strength and excellent corrosion resistance. Due to their duplex structure and the high chrome and nitrogen contents, these steels offer the following benefits when compared to 300 series austenitic grades:

- Higher Strength
- Equal or better resistance to pitting and crevice corrosion
- Excellent resistance to stress corrosion cracking
- Good erosion and fatigue resistance
- Good fabric-ability and weldability

The Continuous Ribbing and Track

A motorized corrugator “bender” which creates an upper “L” bend and a lower “chair” bend on the metal strip. Then a single automatic pulse welder applying a continuous weld to the interior groove formed where the bends meet.



Electronic Variable Speed Drive Motors

The electronic drive post supports the elevated tank by pinching down on the newly welded track. Then the drive rotates the tank clockwise around the roller supports. The drives, bender and welder are synced together through a central electronic touch panel control system.



Cobra Tanks Coil Building Process

The continuous coil spiral in all Cobra Tanks is top grade duplex stainless steel. During the process, the adjacent upper and lower bends of the spiral are welded together on an innovative track system supported by a series of rollers guiding the revolving shell upwards on a helical path. This achieves improved alignment of adjacent edges, stronger welds, stronger hydraulic seals. The track system allows simplified wall positioning, eliminating bulging and strain on welds.

Specifications

Materials

ASTM SA-240 304 and 316 Stainless Steel
Duplex LDX 2101 and 2205 Stainless Steel (NSF61 Cert.)

Standards

AWWA D-100, API 650, AWS, ASME, NFPA, OSHA, NSF61
ASME certified welders and procedures

Tank Sizes

All tanks can be customized from capacities ranging from
25,000 gallons (75 m3) to 1,000,000 gallons (3785 m3)

Coatings

Cobra Tanks provides optional polyurethane coatings.
Cobra Tanks has partnered with Rhino Linings Corp. to
provide professional prep and installation services. Hi-Chem
65D-PW is a two-component, rapid curing, elastomeric
polyurethane lining system specifically designed for potable
water applications(NSF61 Approved). These coating can also
be used to extend the life of the stainless steel tank for
chemical storage too. We can provide these coatings on new
or existing installations of tanks or pipe. This spray-on coating
can be applied on most surfaces like concrete, fiberglass,
metals.

Warranty

Cobra Tanks will extend a 5 year structural warranty. All
items constructed by Cobra Tanks Inc. shall be covered in
this 5 year structural warranty (tank floor, tank shell, tank
roof, tanks nozzles.)

Our Partners

**OUTO
KUMPU**

Avesta
Welding



Cobra Tanks

USA - 1160 Yew Ave, Blaine WA

Canada - 2677 192 Street Unit 104, Surrey BC

Phone 604-541-9423 Fax 604-541-9470

1-877-TANKSSS (826-5777)

info@cobratanks.com

www.cobratanks.com



COBRA TANKS